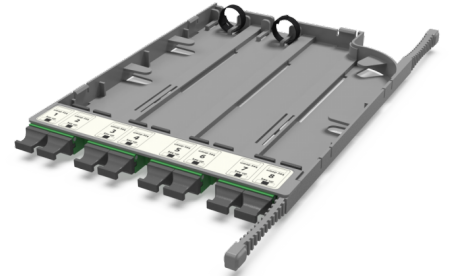


## CA3 - Adapter cassette SM

CA3 - Adapter cassette 8 x MTP(16) adapters (green), SM, TIA type A (opposed key)



### SPECIFICATION

Fiber type	SM 9/125 OS2
Ports quantity	8 ports
Type of interface, front end	MTP(16) adapter (Opposed key)
Material	Engineering Plastic
Product Series	CA3 - Adapter cassette Currant
Cassette/plate polarity	TIA type A
Configuration	Singlemode

### Part Numbers

30223007	CA3 - Adapter cassette 8 x MTP(16) adapters (green), SM, TIA type A (opposed key)
----------	---