

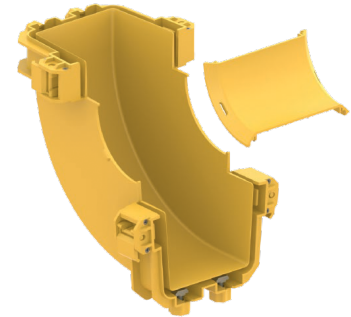
## TRUNCUS 90 Vertical inside elbow connector

### Vertical 90-degree Inside Elbow Connection

Vertical Inside 90-degree Elbow connector is used to connect channels together

The channels fit into the slots on each side of the coupler, and the clamping levers are then pressed down to secure the connection

The connector body and cover must be ordered separately



#### SPECIFICATION

Connection Type	Vertical Connection
Size	100, 200, 300
Material	PC/ABS FR
Compliance	IEC 61249-2-21, RoHS, UL 94V-0

#### Part Numbers

321101011	Truncus - 100mm 90	Vertical Inside Elbow Body, yellow
321101021	Truncus - 100mm 90	Vertical Inside Elbow Cover, yellow
321201011	Truncus - 200mm 90	Vertical Inside Elbow Body, yellow
321201021	Truncus - 200mm 90	Vertical Inside Elbow Cover, yellow
321301011	Truncus - 300mm 90	Vertical Inside Elbow Body, yellow
321301021	Truncus - 300mm 90	Vertical Inside Elbow Cover, yellow
321101012	Truncus - 100mm 90	Vertical Inside Elbow Body, black
321101022	Truncus - 100mm 90	Vertical Inside Elbow Cover, black
321201012	Truncus - 200mm 90	Vertical Inside Elbow Body, black
321201022	Truncus - 200mm 90	Vertical Inside Elbow Cover, black
321301012	Truncus - 300mm 90	Vertical Inside Elbow Body, black
321301022	Truncus - 300mm 90	Vertical Inside Elbow Cover, black